

NORRIS BT700 & BT2000 DISHWASHERS

High performance pass through dishwashers

Winner of two Australian Design Awards:

The Elite Series BT700 and BT2000 continue in the tradition that has won Norris two Australian Design Awards. The new Elite Series dishwashers are the result of extensive market research and experience gained from over 40 years of manufacturing commercial dishwashers. Norris machines are specifically designed to suit Australia's unique and varied conditions.



Versatile: Four wash cycle options give the machines the flexibility to handle any job.

They have a sixty second cycle for washing glasses and lightly soiled plates, a ninety second cycle for a normal wash and a two minute cycle for more heavily soiled items. A manual wash is also included which enables baked on substance to be removed by subjecting them to extended wash periods.



High Performance Under all Conditions: The BT700 and BT2000 have been fitted with powerful wash pumps and separate rinse pumps. The rinse pumps are designed to deliver a constant rinse regardless of incoming water pressures. European machines with their mains pressure rinses have been found to be unsuitable in many installations with varying water qualities and pressures.

Hot Water Booster Tank: Hot water is delivered via the inbuilt water booster tank manufactured from special high-grade stainless steel to combat Australia's highly corrosive water. High capacity three phase elements* ensure quick recovery.

Conformance to Health Regulations:

An internal interlock will prevent the machine from operating unless the temperature required by regulation has been reached. Clearly legible wash & rinse gauges allow the operator to confirm that the machine is operating in the prescribed range.



Suitable for Corner Installation:

Both the BT700 and BT2000 are designed to be installed for either a straight through, corner or a front only operation.

Durable: All stainless steel construction including wash arms and scrap trays ensure long life and protection against harsh detergents and hot water.

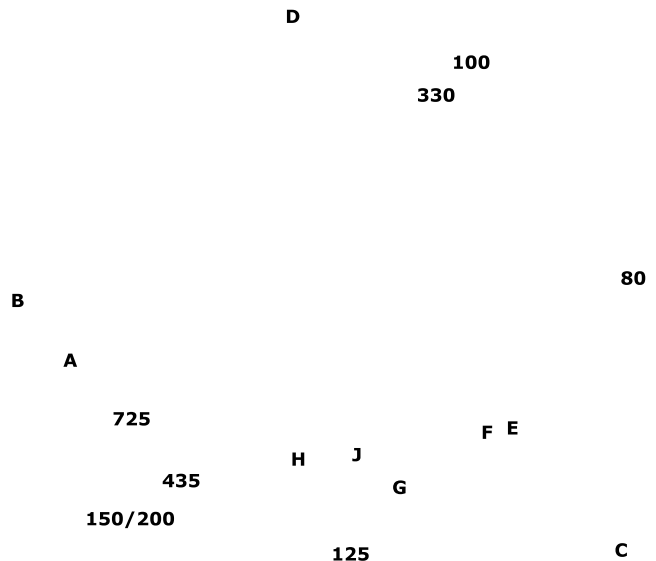


Easy to Maintain: Norris has deliberately refrained from using electronics in their machines. All controls are electromechanical and are readily available, this ensures that should your machine ever need servicing a local tradesperson will be able to get you up & running with minimum disruption and cost.

Service: Norris machines are supported by a nationwide network of service agents.

* The BT700 is also available in 240 volts single phase.
 ** Dependant on incoming hot water temperatures and wash cycle selected
 ***For pressures above 400kPa a pressure limiting valve must be used.

Model	BT700/1	BT700/3	BT2000
Dimensions (mm)			
Height Cabinet Incl legs (A)	1405-1455	1405-1455	1520-1570
Height Hood Open (B)	1925-1975	1925-1975	2060-2110
Leg Height	150-200	150-200	150-200
Width Inside Wash Tank (C)	595	595	645
Width Including Handle (D)	660	660	700
Depth (E)	700	700	725
Depth Including Handle (F)	780	780	795
Usable Wash Height	330	330	450
Waste Height (G)	515	515	455
Basket Tray Size	500 x 500	500 x 500	500 x 500
Capacity			
Loads Per Hour	Up to 40**	Up to 40**	Up to 55**
Wash Pump (Watts)	560	560	895
Rinse Pump (Watts)	373	373	560
Wash Tank Capacity (Litres)	22	22	34
Rinse Tank Capacity (Litres)	12	12	12
Wash Tank Element (kW)	1.7	1.7	1.7
Rinse Tank Element (kW)	2.4	8.9	11.4
Wash Temperature (C0)	55-60	55-60	55-60
Rinse Temperature (C0)	82-88	82-88	82-88
Total Cycle Time (Sec)	60/90/120	60/90/120	60/90/120
Wash Cycle Time (Sec)	45/75/105	45/75/105	45/75/105
Rinse Cycle Time (Sec)	17	17	17
Hot Water Usage per Cycle (L)	3.5	3.5	4
Plumbing Connections			
Hot Water (BSP) (H)	15mm/1/2"	15mm/1/2"	15mm/1/2"
Gravity Drain Waste (BSP) (J)	50mm/2"	50mm/2"	50mm/2"
Water Pressure (kPa)	150-400***	150-400***	150-400***
Electrical			
Voltage	240	240/415	240/415
Amps per Phase	20	15	20
Total Load (kW)	4.7	11.2	13.4



Norris Industries Pty Ltd

ABN 69 002 351 840

28 Strathmore Road, Caves Beach.NSW 2281

Telephone (02) 4971 4500. Facsimile (02) 4972 1064

www.norris.com.au



YOUR NORRIS DISTRIBUTOR: