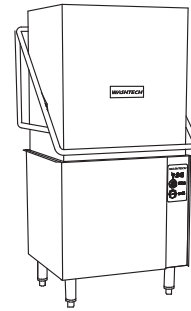


WASHTECH

PROFESSIONAL WASH SYSTEMS

The Washtech range of heavy duty warewashers offer the perfect solution for washing and sanitising a wide range of food processing equipment and utensils - releasing staff for more productive work.

- ★ Triple Cycle Selection - 2, 4 and 6 minute cycles
- ★ Two horsepower wash pump with 800 litres/min circulation capacity ensures a thorough cleaning process - no more greasy items
- ★ High clearance wash compartment for items to 650mm high
- ★ Double filtration of wash water with scrap trays and pump filters
- ★ Uses only 4 litres of water per cycle - lower water consumption than sink or waterblaster washing
- ★ Each load is sanitised at 80°C - meets hygiene regulations
- ★ Robust construction - heavy gauge stainless steel cabinet & frame
- ★ Not suitable for corner installations
- ★ Ease of Servicing - controls and componentry all fully accessible from the front of the machine -
- ★ Supported by the Washtech nationwide service network
- ★ 1 year parts and labour warranty



AL8 Specifications

Cycle time	2/4/6 Minutes
Wash compartment clearance	650mm high
Wash compartment floor	700 x 510mm
Wash system	Recirculating via upper & lower rotating spray arms
Wash pump	1500W 2.0 h.p
Wash pump circulation capacity	800 litres per minute
Wash tank capacity	85 litres
Wash tank heating	3.6 kW
Rinse system	Hot water via upper & lower spray arms.
Rinse cycle	15 seconds
Rinse water consumption per cycle	4 litres
Rinse boiler heating	10kw
Rinse pump (optional)	375W 0.5h.p
Drying agent	Injection point fitted.

Standard accessories

Lift out stainless steel grid - 700mm x 510mm
 2x 500mm Open racks
 500mm Plate rack
 8 Division cutlery container

Options - To be specified with order

A full range of specially designed racks to suit your requirements
 Rinse pump
 Insulation
 Steam heating
 Detergent Pump
 Customisation to client specification

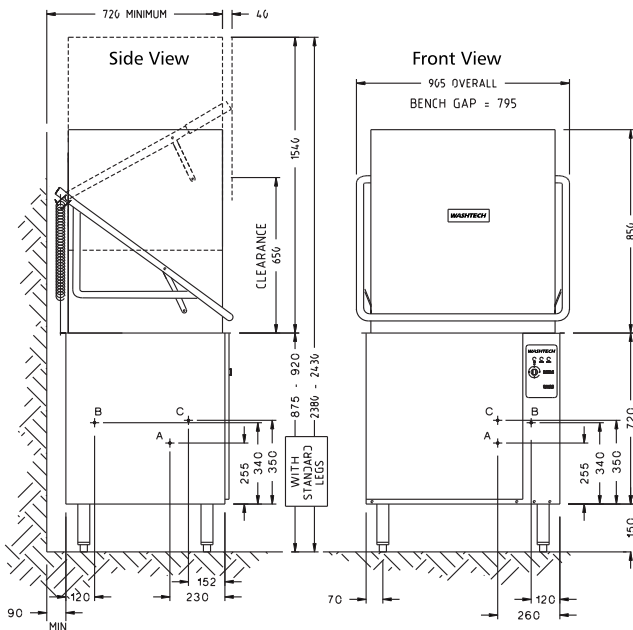
Typical load capacity

3 x 20 Litre pails, or
 1 x Plastic Bread tray, or
 1 x 80 Quart Mixing Bowl, or
 3 x Baking Trays, or
 1 x Plastic produce crate up to 650 x 500 x 650mm

Installation notes - refer drawing for connection points

- A Water Supply**
 Supply lines 20 mm lines to 15 mm connection (1/2" BSP)
 Temperature 65°C +/- 5°C
 Pressure 200 to 400 kpa
 Flow rate 20 to 25 litres per minute
 Consumption 4 litres per cycle
- B Waste**
 40mm connection
 Direct through rear of machine
- C Power**
 C Power 3P+N+E 25 Amps per phase, 50Hz
 Permanently wire via a wall switch to one side of machine

- ★ Benchwork detail drawing available on request
- ★ Minimum bench depth is 700mm, but 750mm is recommended
- ★ Legs available on request for non-standard bench heights
- ★ Allow minimum 40mm clearance to each side of the machine
- ★ Allow space for chemical containers - detergent, and rinse fluid
 20 litre chemical containers each require about 250mm(w) x 350mm(d) x 450mm(h)



NOTE: Due to constant product improvement these specifications may be amended at any time

MOFFAT
www.moffat.com.au

Australia
Moffat Pty Limited

Victoria/Tasmania
 740 Springvale Road
 Mulgrave, Victoria 3170
 Telephone 03 9518 3888
 Facsimile 03 9518 3833
 Email vsales@moffat.com.au
www.moffat.com.au

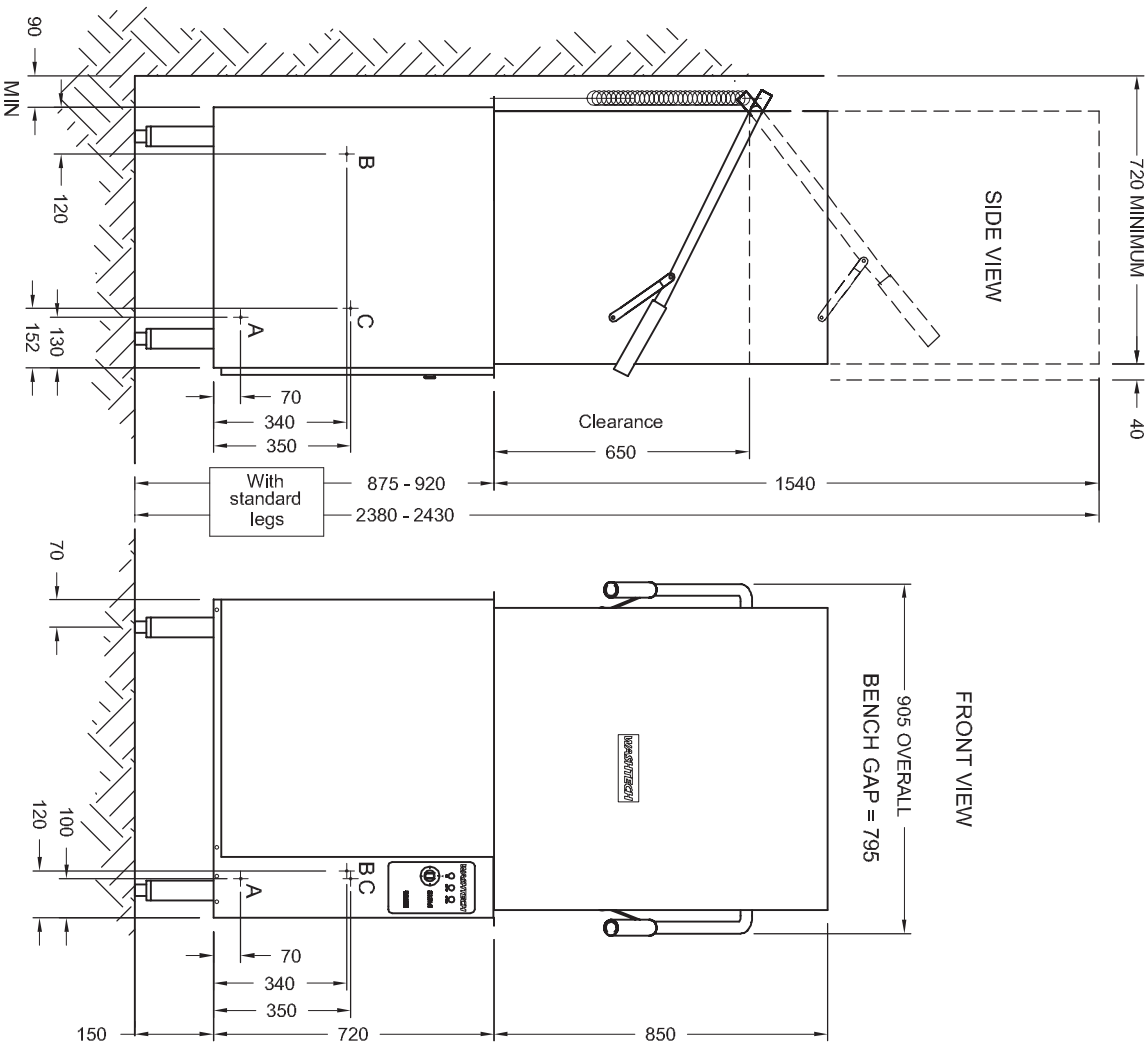
New South Wales
 Telephone 02 8833 4111
 Email nswsales@moffat.com.au

South Australia
 Telephone 08 8274 2116
 Email dmiller@moffat.com.au

Queensland
 Telephone 07 3630 8600
 Email qldsales@moffat.com.au

Western Australia
 Telephone 08 9305 8855
 Email jberent@moffat.com.au

WASHTECH AL8



- ⑥ Recommended water supply pressure 1 - 4 bar = 100 - 400 Kpa = 15 - 60 Psi. The rinse pump which is fitted standard will compensate for pressures as low as 0.5 bar provided good flow is available. Water inlet connection Ø15mm. Do not use small diameter plastic water supply lines.
- ⑦ It is essential that power supply is 5 wire, 3 phase (3Ph +N +E), 25A. Power connection Ø15mm. Do not use should be permanently wired via a wall switch to one side of machine.

INSTALLATION

Installation personnel must be suitably qualified and ensure compliance with all codes and standards. Install machine on sound self-draining floor and use adjustable feet to level machine.

Minimum clearance to each side of machine = 50mm
 Recommended bench depth = 750mm - minimum = 700mm
 Bench work detail drawing available on request
 Legs available to suit other heights - specify bench height

Allow room for detergent to one side of machine or in adjacent cupboard. 20 litre containers require 450H x 250W x 350D but smaller containers are available from many suppliers.

A. WATER SUPPLY

- Temperature - 65°C
- Pressure - 1-4 bar - 100-400KPa = 15-60Psi
- Flow rate minimum - 20 litres per minute
- Consumption - 3 litres per cycle approx.
- Connection - 20mm (3/4" BSP Male) FLUSH SUPPLY LINE before connection (point A on drawing)
- Line strainer is fitted. Do not use small diameter plastic supply lines. Pressure limiter required over 400 KPa. Booster pump fitted for low pressure situations. In hard water areas water softening is recommended particularly with glasswashers.

B. WASTE

40mm - refer point B on drawing. Direct behind machine or through open area in base.

C. POWER

Recommended electrical supply is single phase 230V 25A 50Hz permanently wired via wall switch mounted adjacent to machine. (Machine may also be installed on 400V, 15A 50Hz 3Phase, N + E or 15A single phase with reduced rinse heating). Easy on site conversion of standard machine for any of these requirements.

COMMISSIONING PROCEDURES:

Connect all services as above. Ensure that all internal machine components such as filters and drain upstand are in place. Turn on water and switch on power. Close machine door and select any cycle, machine will fill. When water sprays from spray arms inside machine, switch machine off at wall. Remove lower front panel and switch commissioning switch by breaking label over same. Close panel and switch machine on. Machine is now ready for use - refer operating instructions.

PERISTALTIC DETERGENT PUMP

Insert pump inlet hose into the detergent container. Close machine door and switch machine on. Allow wash tank to fill up then press detergent pump prime switch to prime inlet and outlet hoses. Stop priming when detergent reaches machine. Machine will not fill unless ready light is on and door is shut. Turn power off before opening door as machine will cycle again when door is closed. Pump operates during the wash cycle and is set to run for approximately 10 seconds. Use yellow adjusting tool, supplied with instructions, to adjust cam 6 to vary this time. Increase cam gap(away from 0 mark) to increase pumping time.

NOTE:

1. Due to constant product development, dimensions and specifications are subject to alteration without notice.
2. Benchwork detail available on request.

WASHTECH
 PROFESSIONAL WASH SYSTEMS

414 ROSEBANK ROAD, AUCKLAND, NEW ZEALAND
 Tel (09) 829-0930 Fax (09) 829-0930

Description AL8 INSTALLATION DIAGRAM (WASHTECH)	CHECKED BY	ISSUE NO.	REV.	ISSUE DATE	DRAWING NO.
DO NOT SCALE - IF IN DOUBT ASK	DWG SIZE	A3 (396x265)	1	08-05-02	AL0031

SPECIFICATION SUBJECT TO CHANGE WITHOUT NOTICE